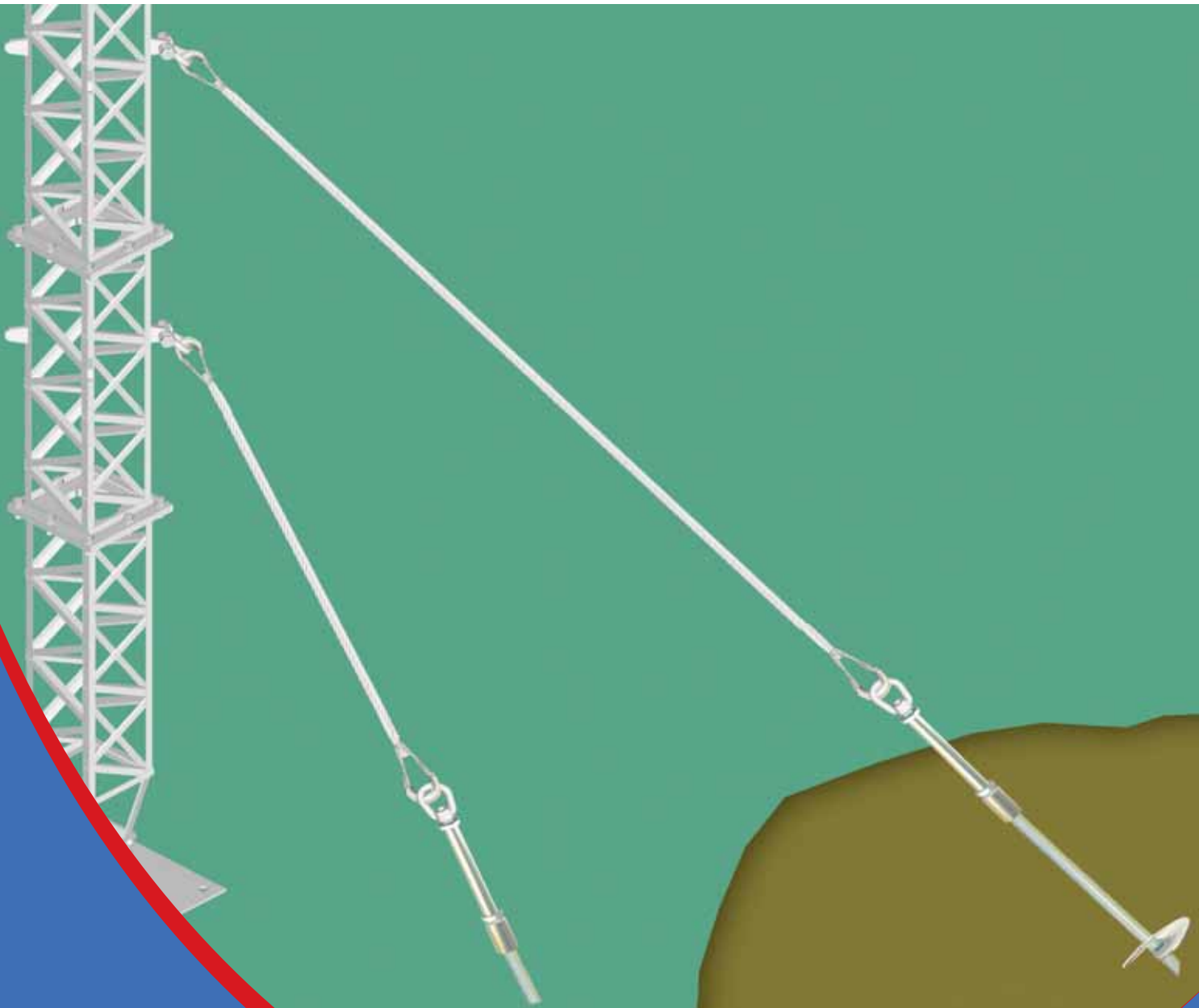


SUPREME

www.supreme.in

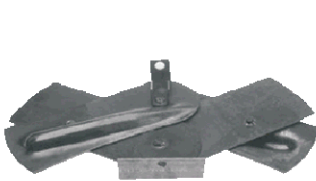
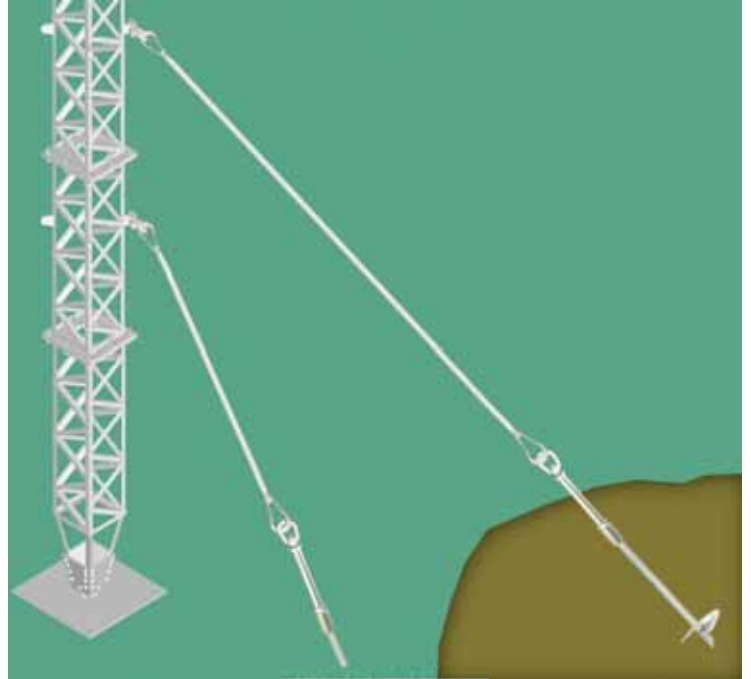


Anchoring Solutions

for Emergency Restoration of Transmission Line

Anchoring Solutions for Emergency Restoration of Transmission Line

We provide anchoring solutions for installation for modular structures used in emergency restoration deployment. We can provide full range of hardware fittings, accessories, foundation plates, stays / guys and anchors. Our solutions will enable service providers to use modular structures for rapid restoration of transmission line in case of damage to towers structures and sections.



Expanded
Close
Extended Pole Ending Anchor



Expanding
Anchor for Soil



Anchor Helix
Assemblies-Lead



No Wrench
Screw Anchor
Oval Eye



No Wrench
Screw Anchor
Triple Eye



Tubular Type
Stay Rod



Thimble
Eye Nut
Oval
Eye Nut
Extension Rod &
Couplings



Lead
Section



Extension



Guy
Adapter

Square-Start Shaft Screw Anchor



Helix Anchor



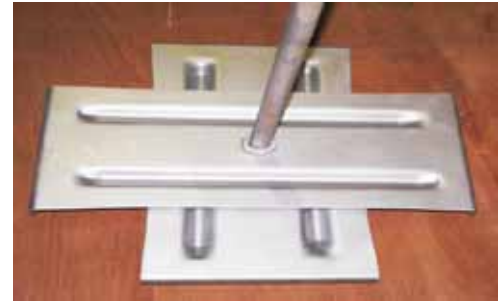
Marshy Soil Large Anchor Plate



Rock Anchor



Ray Type Anchor



Cross Plate Anchor



Beginning of the application test by screwing in the anchor



Application Test for Helix Anchor has screwed in



Triple Helix Anchor now Fully Installed



Helix Anchor Pulled-out at 50kN Load

Testing of Helix Anchor Un-compacted Loose Fly Ash



Simulated Field Testing of Ray Type Anchor



SUPREME & CO. PVT. LTD.

ISO 9001: 2008 & 14001: 2004 Certified

City Office

53, Justice Chandra Madhav Road,
Kolkata - 700020, West Bengal, India.
Phone : +91-033-24745984/ 85
Fax : +91-033-24746537 / 24761955
Mail : info@supreme.in/ ho@supreme.in
Website : www.supreme.in

Work Office

P-200, Benaras Road,
Howrah - 711108, West Bengal, India.
Phone : +91-033-26513719/ 6321/ 22
+91-033-26516701 to 05
Fax : +91-033-26514792/ 6706
Mail : sales@supreme.in